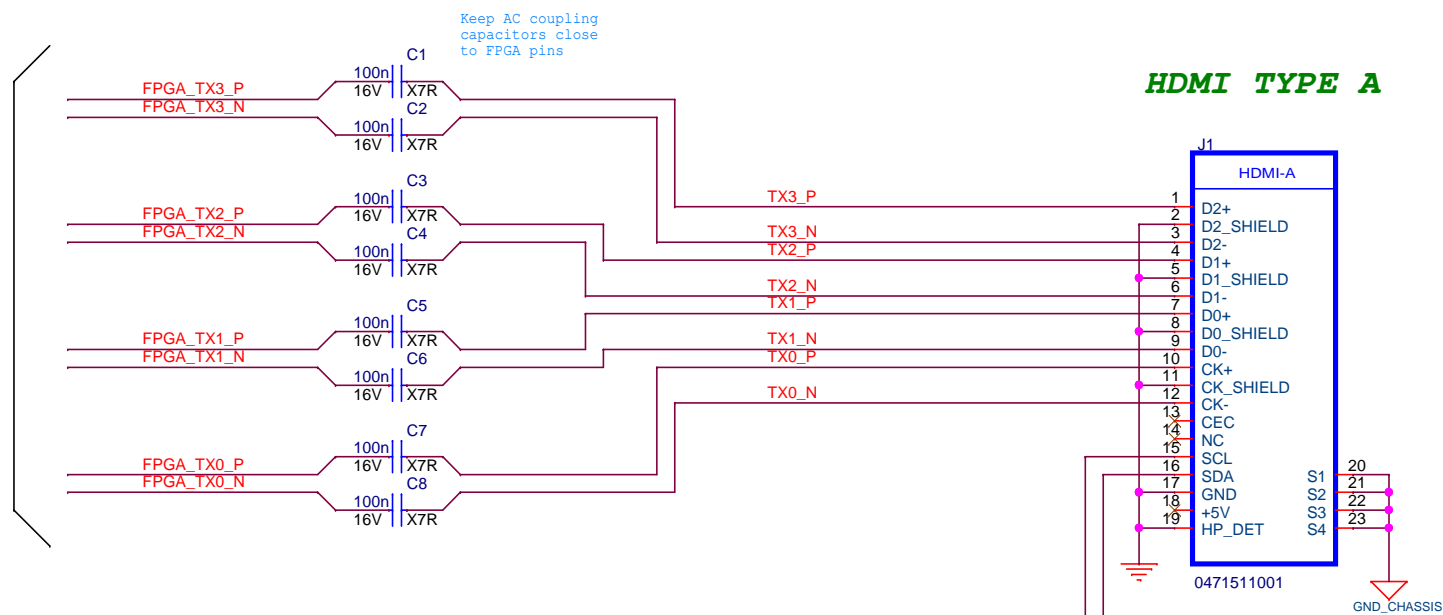
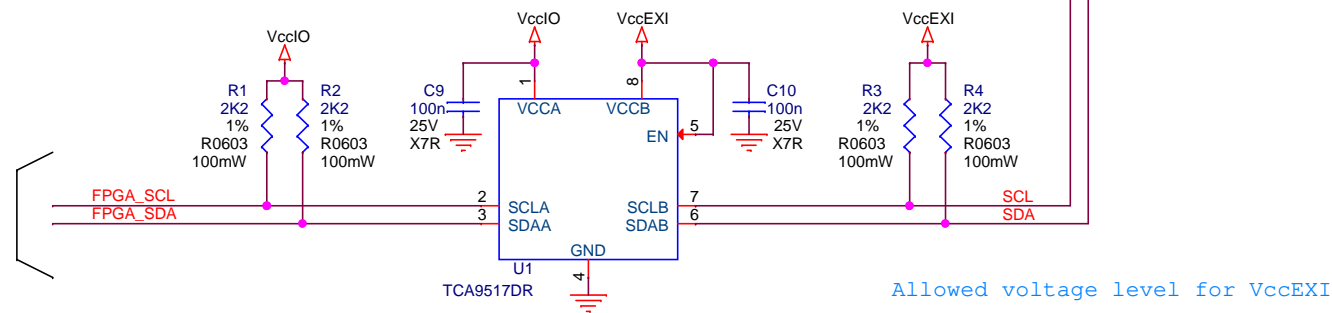


Connect to FPGA TX transceiver pins. Lanes order is don't care. Differential pairs within lane can be swapped



I2C LEVEL CONVERTER

Connect to FPGA logic I/O

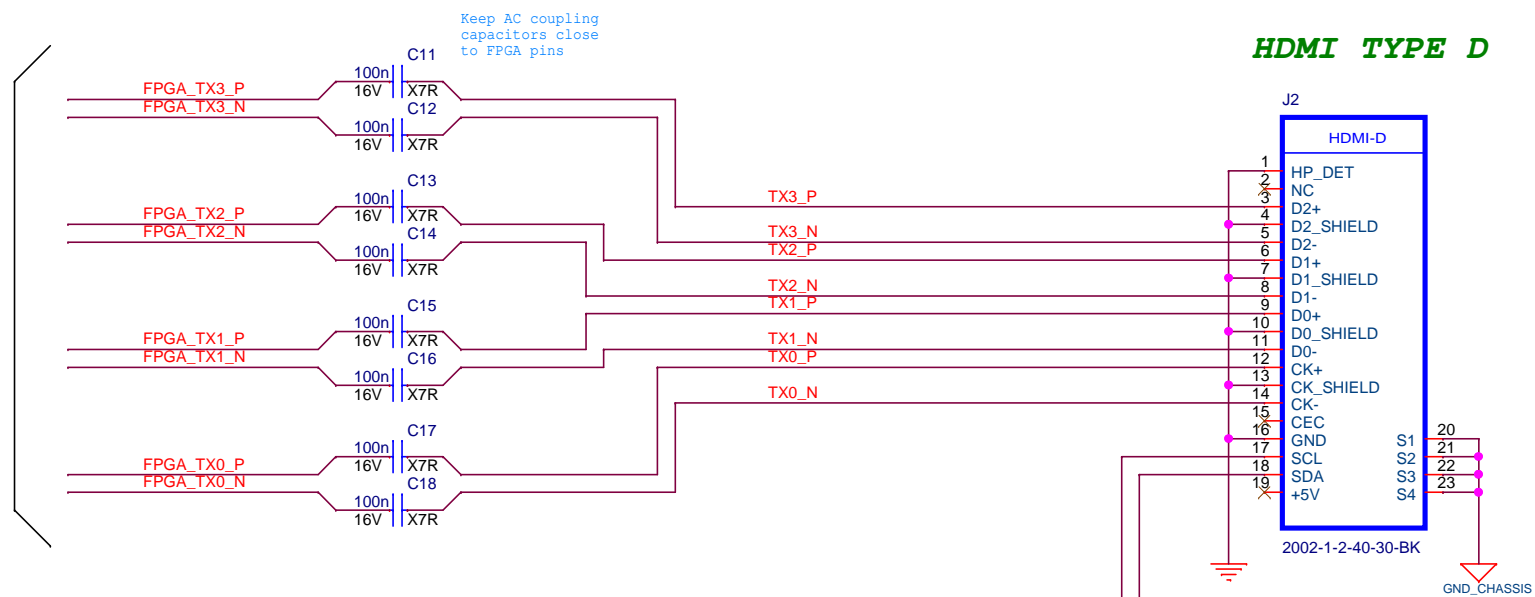


Allowed voltage level for VccEXI
+2.5V <= VccEXI <= +3.3V

The level converter is only needed if VccIO voltage level is below +2.5V.

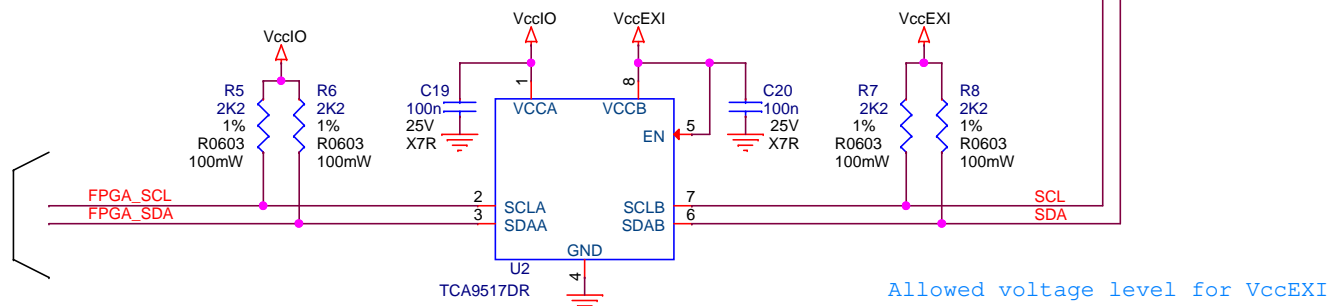
TCA9517 is used as example. Any other level converter compatible with I²C bus specifications can be used.

Connect to FPGA TX transceiver pins. Lanes order is don't care. Differential pairs within lane can be swapped



I2C LEVEL CONVERTER

Connect to FPGA logic I/O



Allowed voltage level for VccEXI

$$+2.5V \leq VccEXI \leq +3.3V$$

The level converter is only needed if VccIO voltage level is below +2.5V.

TCA9517 is used as example. Any other level converter compatible with I²C bus specifications can be used.