

Exostiv Raw Fusion Utility

User's Guide

Rev. 1.0.1- June 30, 2025

Table of Contents

Exostiv Raw Fusion	4
Introduction.....	4
Main Window	4
Controls	5
Menu File.....	6
Using raw fusion with a command line.....	6

Revision History

Revision	Modifications
1.0.0	<ul style="list-style-type: none">• Initial revision
1.0.1	<ul style="list-style-type: none">• Added remarks about unreleased functionalities

Exostiv Raw Fusion

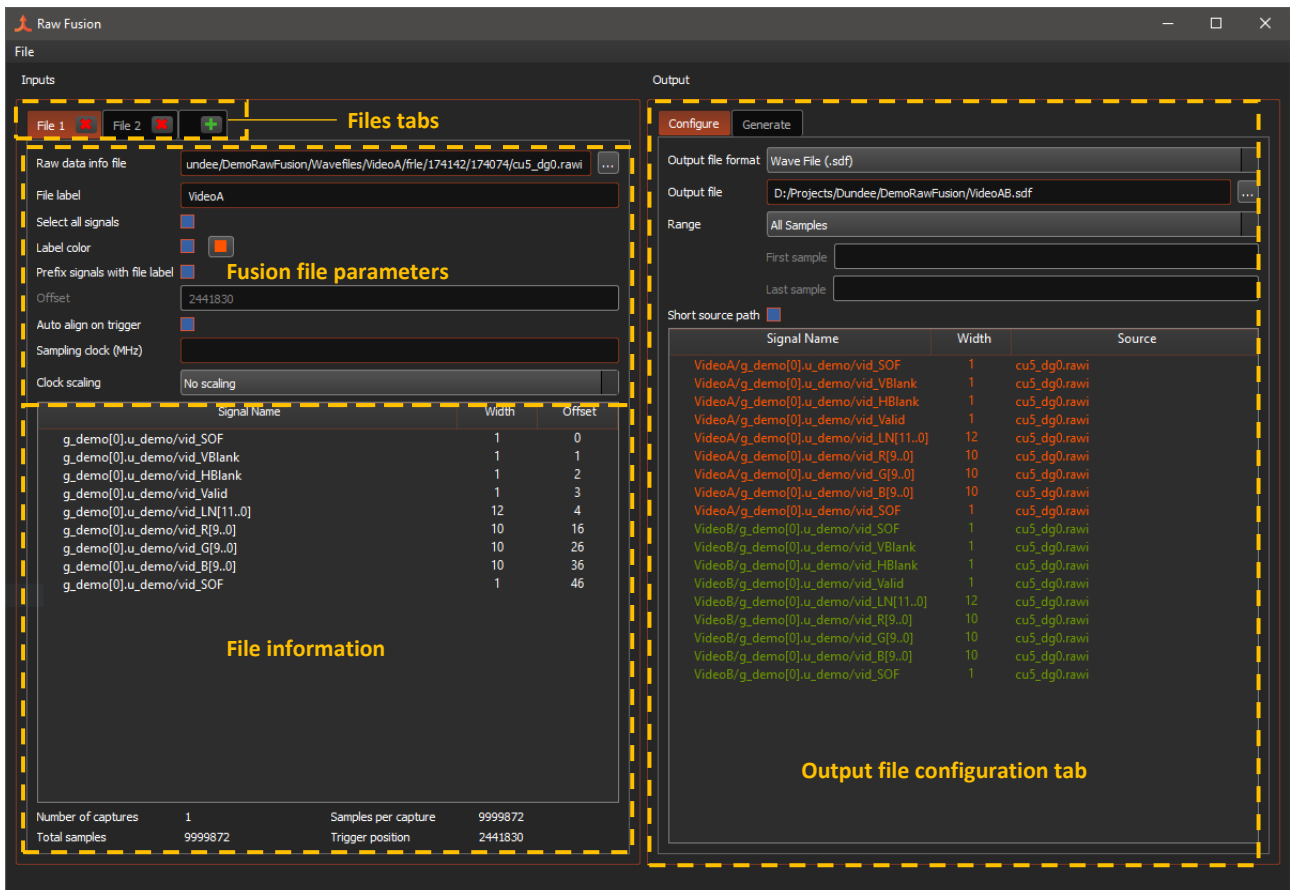
Introduction

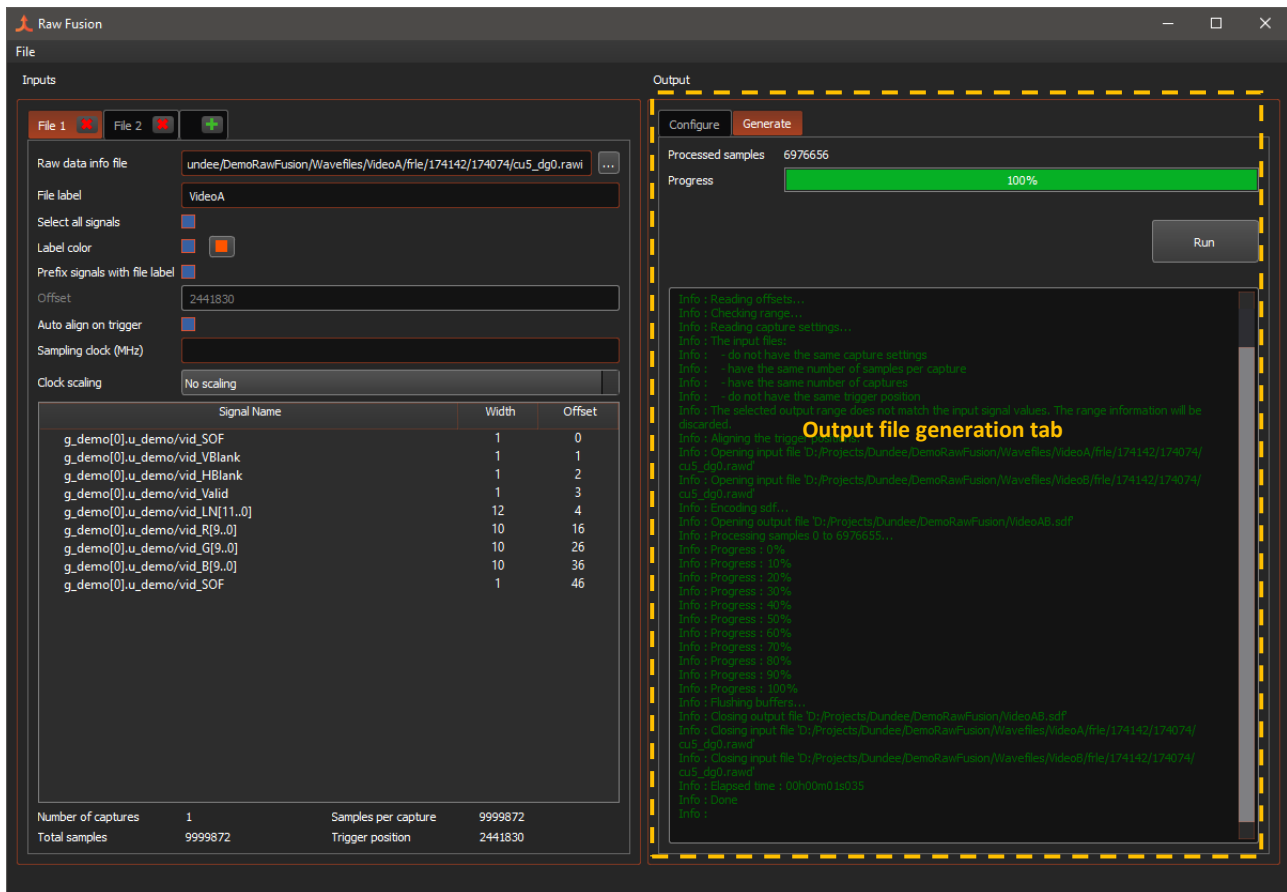
This guide provides instructions on how to use the 'Exostiv Raw Fusion' utility.

The 'Exostiv Raw Fusion' utility enables users to combine and merge capture data and waveforms originating from various sources and captured with separate Exostiv IPs instances.

It is especially useful when multiple IP instances are used to capture data generated in the same clock domain, when the multiple sources must be analyzed from the same waveform window.

Main Window





Controls

Controls	Description	Comments
Files tabs	Each source file is specified and configured in its own tab. Click on '+' to add a tab (and a source file).	
Fusion file parameters		
Raw data info file	Use the dialog to specify the source file path. The .rawi (raw file information file) must be specified.	Specifying the .rawi automatically points to the corresponding data file (.rawd). The rawi and rawd files should be located at the same level.
File label	String used to designate the data source	
Select all signals	When the tick box is selected, all the signals in the source file are automatically selected for the merging operation and will appear in the list in the 'output file configuration tab'. When unticked, signals to be included in the operation must be selected (control + click) in the file information then drag to the output file configuration tab list.	To remove signal from the list in the output file configuration tab, select signal, rick click and select one of the remove options in the menu.
Label color	Pick a color for this source file signals	
Prefix signals with file label	When tick box selected, adds the prefix '<file label>/' to output file signal names.	
Offset	Specifies the start sample in the file.	
Auto align on trigger	When selected, automatically aligns on the source file trigger event.	Only for single trigger data sets.

Sampling clock (Beta unreleased functionality) – currently being tested.	Dialog allows specifying the source sampling clock frequency. This information is used if the source files are generated on sampling clocks with different frequencies.	Allows adjusting the relative horizontal scaling of sources that use a different sampling rate.
Clock scaling (Beta unreleased functionality) – currently being tested.	Drop down list options: No scaling Decimal scaling Fractional scaling Lets the user decide about an arbitrary horizontal (time) scaling, specified either as a number or as a fraction.	
File information		
Signal list	Lists the signals, their size and 'offset' (rank in the list) available from the source file.	
Information panel	Number of captures: number of trigger counted in the source file. Samples per capture: number of samples in each capture. Total samples: total nr of samples in the source file. Trigger position: sample position where the trigger condition was detected.	
Output file configuration tab		
Output file format	Specifies the output file format (.sdf) for waveform file or raw file (.rawd + rawi)	
Output file	Specifies the output file path and name.	
Range	All samples or range: defines whether all samples or a specified range must be exported.	
First sample	In case a range is selected, allows specifying the position of the first sample that must be exported.	
Last sample	In case a range is selected, allows specifying the position of the last sample that must be exported.	
Short source path	When ticked, the source path includes the source file name, not its path.	
Output file generation tab	Once the merging operation is configured, this tab provides the controls to start it and receive the logs.	Click on the 'Run' button to start merging.

Menu File

- **Load** : allows recalling a former raw fusion configuration;
- **Save** : saves the raw fusion configuration;
- **Save as**: saves the raw fusion configuration to a new name;
- **Close** : closes the current project
- **Exit**: exits the application.

Using raw fusion with a command line.

Please check article:

<https://www.exostivlabs.com/knowledgebase/how-can-i-use-the-raw-fusion-utility-in-command-line/>

Copyright

© Exostiv Labs Srl 2025. Exostiv Labs™, the Exostiv Labs logo, Exostiv™ and MYRIAD™ are trade names and/or trademarks of Exostiv Labs Srl. All rights reserved. Other brands and names mentioned in this document are the trademarks of their respective owners.

Exostiv Labs Srl is a company registered in Belgium, 18 Avenue Molière, 1300 Wavre.
VAT / REG nr: BE0873.279.914.

AMD, the AMD Arrow logo, Alveo, Artix, ISE, Kintex, Kria, MicroBlade, Spartan, Ultrascale, Versal, Virtex, Vitis, Vivado, Zynq and combinations thereof, are trademarks of Advanced Micro Devices, Inc.

Disclaimer

THIS DOCUMENT IS PROVIDED "AS IS". Exostiv LABS PROVIDES NO REPRESENTATIONS AND NO WARRANTIES, EXPRESS, IMPLIED OR STATUTORY, INCLUDING, WITHOUT LIMITATION, THE IMPLIED WARRANTIES OF MERCHANTABILITY, SATISFACTORY QUALITY, NON-INFRINGEMENT OR FITNESS FOR A PARTICULAR PURPOSE WITH RESPECT TO THE DOCUMENT. For the avoidance of doubt, Exostiv LABS makes no representation with respect to, and has undertaken no analysis to identify or understand the scope and content of, third party patents, copyrights, trade secrets, or other rights.

This document may include technical inaccuracies or typographical errors.

The contents of this document are subject to change without notice. This document may contain information on an Exostiv Labs product under development by Exostiv Labs. Exostiv Labs reserves the right to change or discontinue work on any product without notice.

TO THE EXTENT NOT PROHIBITED BY LAW, IN NO EVENT WILL Exostiv LABS BE LIABLE FOR ANY DAMAGES, INCLUDING WITHOUT LIMITATION ANY DIRECT, INDIRECT, SPECIAL, INCIDENTAL, PUNITIVE, OR CONSEQUENTIAL DAMAGES, HOWEVER CAUSED AND REGARDLESS OF THE THEORY OF LIABILITY, ARISING OUT OF ANY USE OF THIS DOCUMENT, EVEN IF Exostiv LABS HAS BEEN ADVISED OF THE POSSIBILITY OF SUCH DAMAGES.

Exostiv Labs products are not designed or intended to be fail-safe or for use in any application requiring fail-safe performance; you assume sole risk and liability for use of Exostiv Labs products in such critical applications.

<https://www.exostivlabs.com>